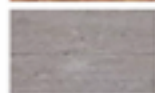


Wood Bungalow



Category A Easy



1. The house is a simple rectangular structure with a gable roof. The walls are covered in white horizontal siding, and the roof is made of brown tiles. The house has a central door and three windows. The windows are arranged with two on the left and one on the right of the door. The door is yellow in the first version and grey in the second. The house has a brown base. The roof is made of brown tiles. The house is a simple rectangular structure with a gable roof. The walls are covered in white horizontal siding, and the roof is made of brown tiles. The house has a central door and three windows. The windows are arranged with two on the left and one on the right of the door. The door is yellow in the first version and grey in the second. The house has a brown base. The roof is made of brown tiles.

